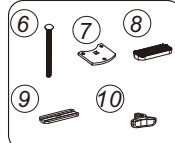


1. Arm Connector (1PC)
2. Clamp Installation Parts(1PC)
3. Bottom Support(1PC)
4. Anti-Slip Rubber1 (2PCS)
5. Cable Cove(1PC)
6. Knob(1PC)
7. Piercing Plate(1PC)
8. Anti-Slip Rubber2 (1PC)
9. Pressure Plate (1PC)
10. Knob Nut (1PC)

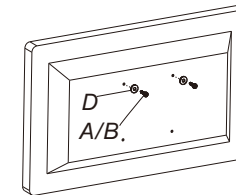
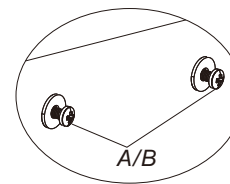
Piercing Parts



STEP2

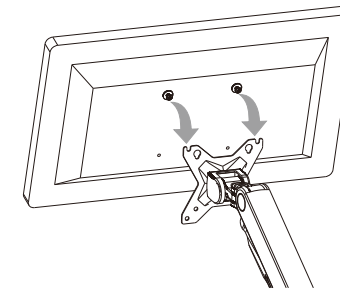
Connect the plate and monitor

1

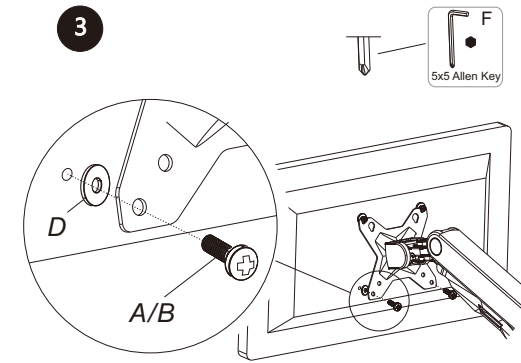


Use washer if needed (D)

2



3

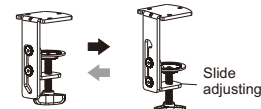


STEP1-A

Option 1: Clamp



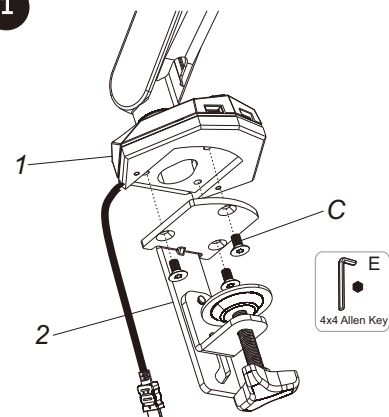
Note
Please select the appropriate mounting holes according to the thickness of desk



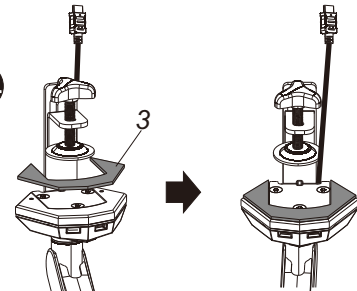
Caution



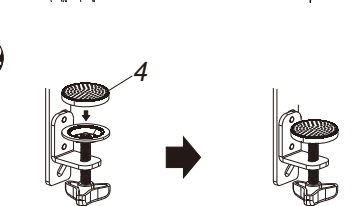
1



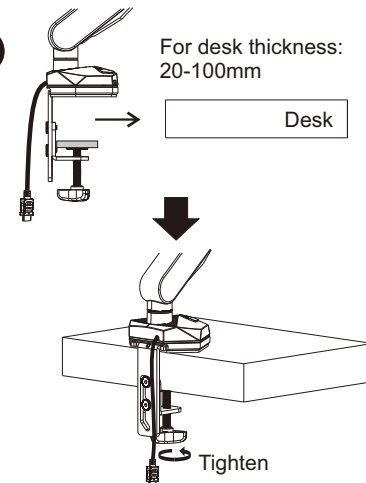
2-1



2-2



3



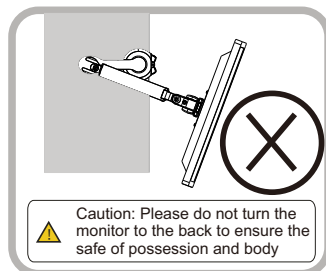
For desk thickness:
20-100mm

Desk

Tighten

STEP3

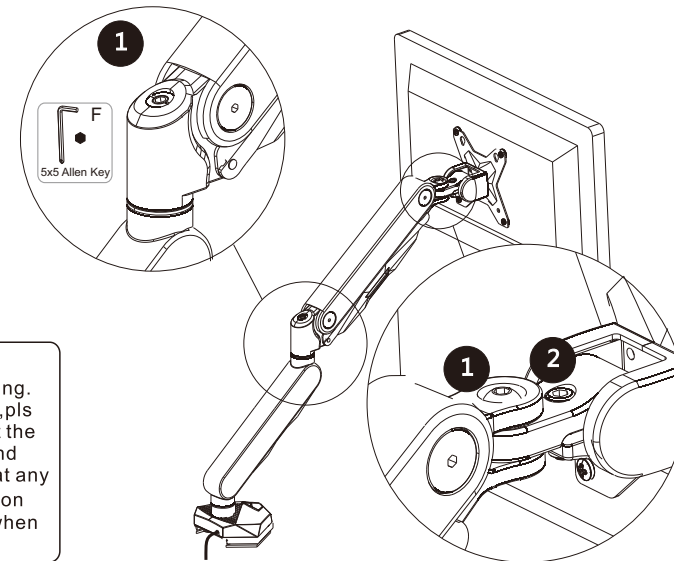
Adjust the monitor



Caution: Please do not turn the monitor to the back to ensure the safe of possession and body

Factory setting: 4-5KG
Adjust the monitor's height after installing. If the monitor cannot stop at any height, pls use the supplied 5x5 allen key to adjust the screw on the arm. To make the mount and monitor's weight equal and it can stop at any height, pls adjust the screw in "-" direction when the monitor up and "+" direction when it down.

1



Attention

To adjust the swivel function by 5*5allen key(F) on position 1
To adjust the tilt function by 5*5allen key(F) on position 2

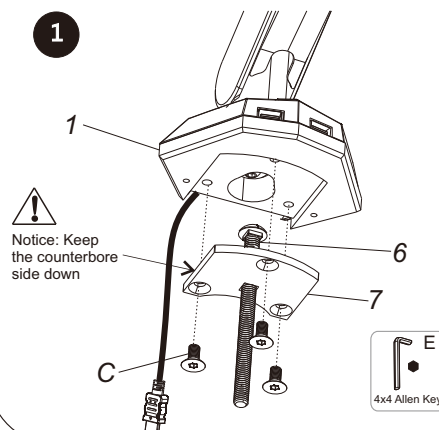
Attention

After the wrench is used up, it can be stored in the cable cove for future use!

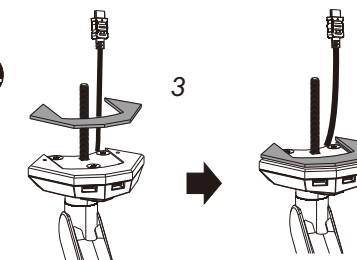
STEP1-B

Option2: Grommet

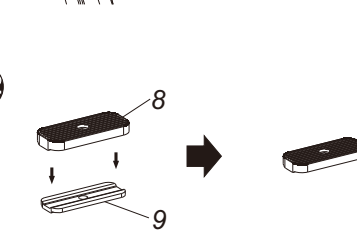
1



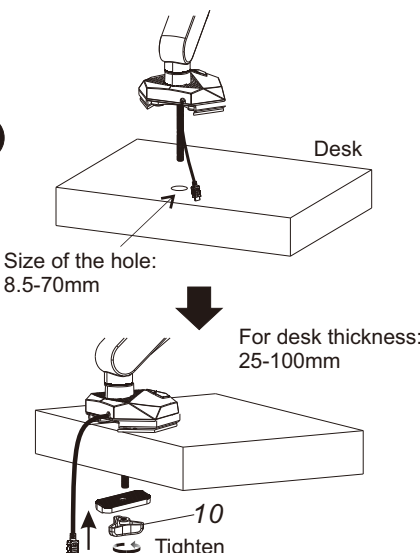
2-1



2-2



3



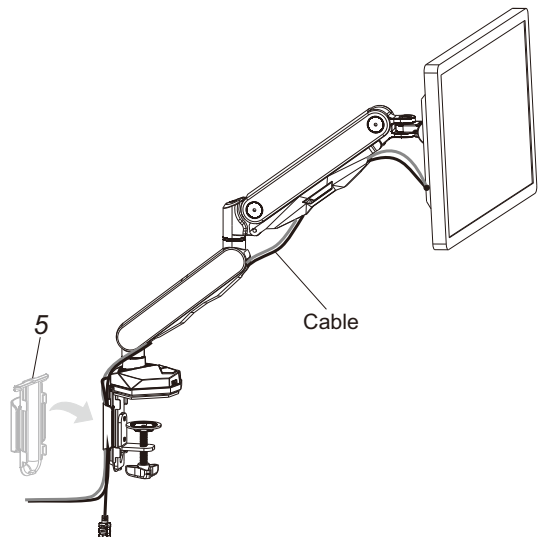
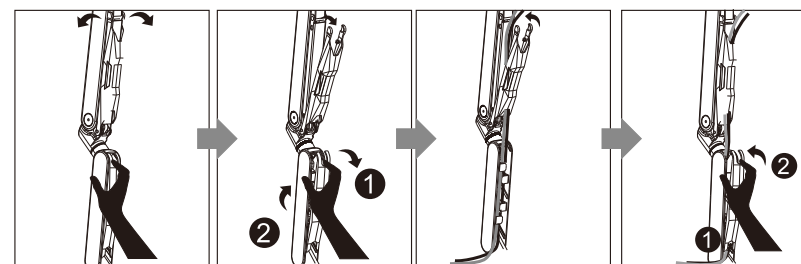
Size of the hole:
8.5-70mm

For desk thickness:
25-100mm

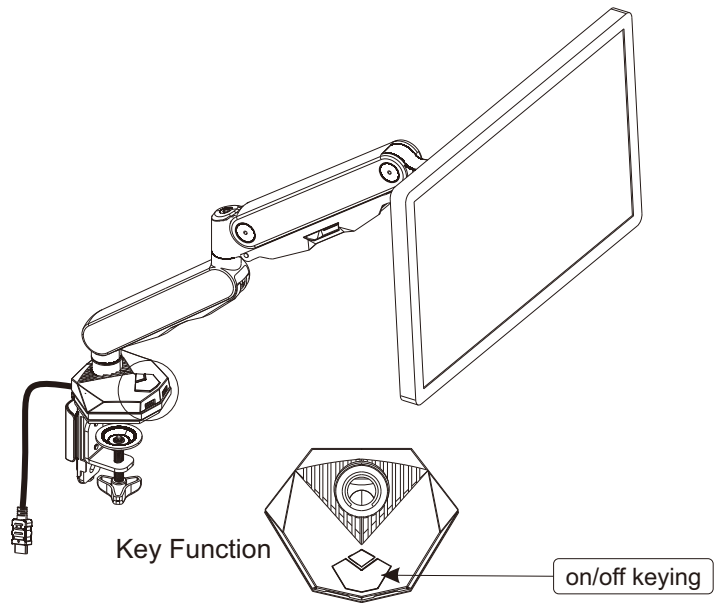
Tighten

Cable management

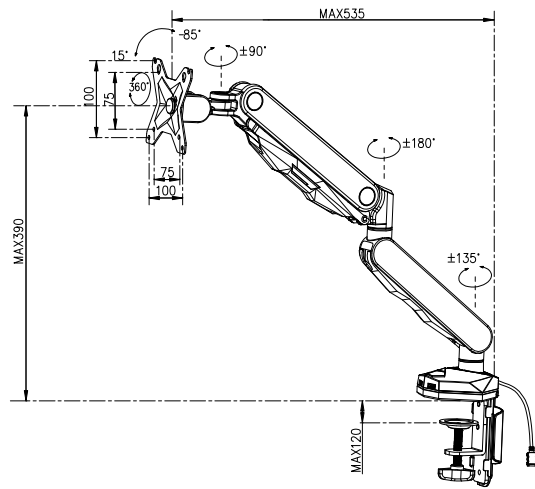
Dismantle and use of the arm cables



Key Function



Product Specification



CAUTION

- This product contains small items that could be a choking hazard if swallowed.Keep these items away from young children.
- Make Sure these instructions are read and completely understood before attempting installation.If you are unsure of any part of this installation,please contact a professional installer for assistance.
 - The desk or mounting surface must be capable of supporting the combined weight of the mount and the display,otherwise the structure must be reinforced.
 - Safety gear and proper tools must be used.A minimum of two people are required for this installation.Failure to use safety gear can result in property damage,serious injury or death.
 - please check joint parts every two months,making sure the screws are loosened or not.

This product was designed to be installed on desk.Before installing, make sure the mount will support the combined load of the equipment and hardware.Never exceed the maximum load capacity 9 KG, or else it may result in product failure or personal injury.

Note:this product is intended for indoor use only.Use of this product outdoors could lead to product failure or personal injury.

Warning: This product contains high pressure gas spring parts, please do not put it into fire, high temperature, or disassemble it, which will lead to unexpected personal injury. The obsolete products can be sent back to the manufacturer or handed over to professional institutions.

To ensure the sealing performance of the gas spring, it is suggested to have complete adjustment to the upper arm (with spring) one time or several times every month.

Made in ChRL for
DMTrade Mikołaj Tomaszewski
Wiśniowa 36, 64-000 Kościan, Poland

NIP: PL6981681757
email: sklep@dmtrade.pl
phone #1: +48 661 082 052
phone #2: +48 726 082 052

www.ergoline.spacetronek.eu