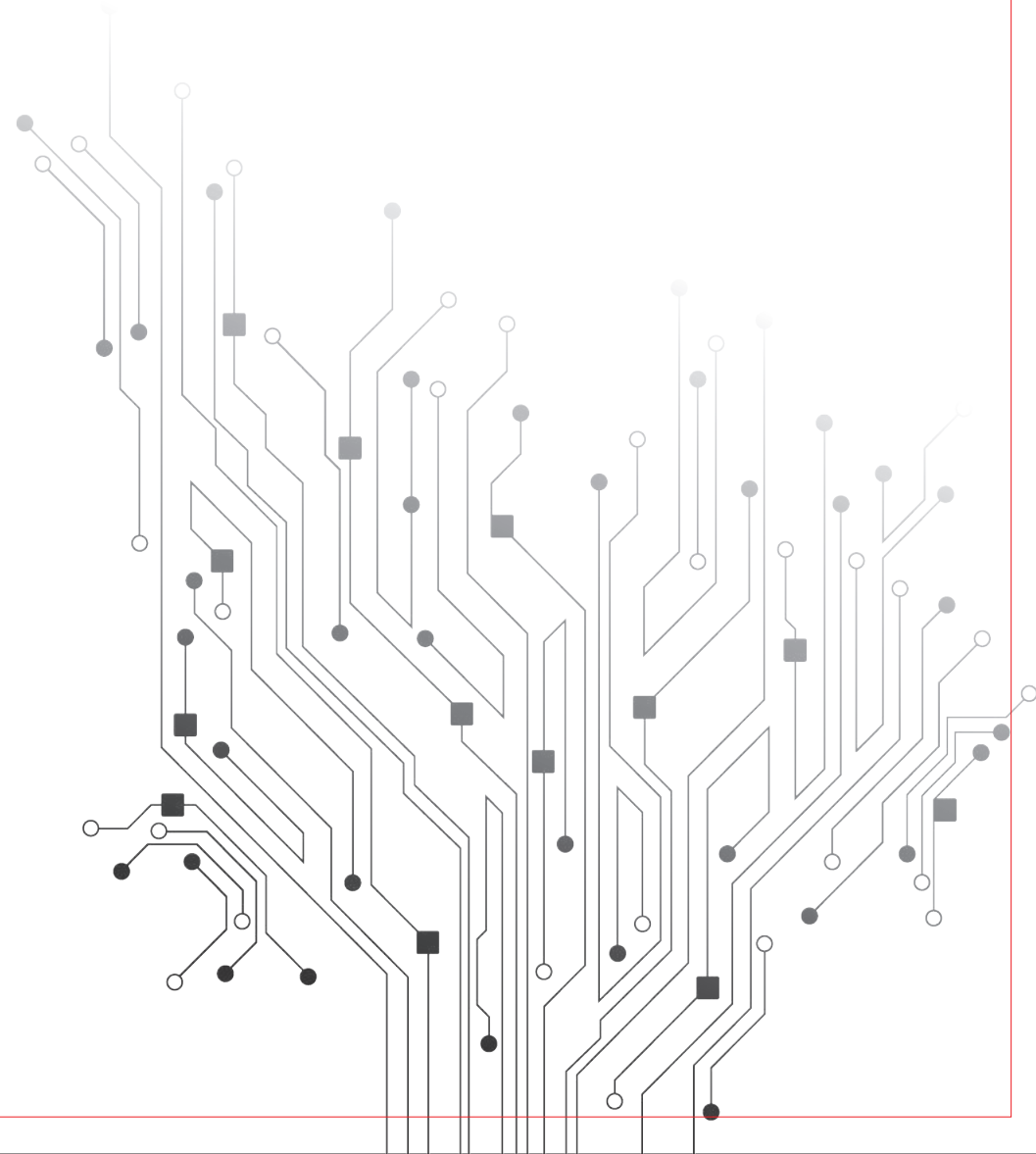


Quick User Guide



1. App Download - Smart Life



IOS / Android

Download the app from App Store or Google Play, run the app on your smart phone, and set up the smart video doorbell, following the app instructions.

2. Smart WiFi Battery Camera Parameter:

Smart WiFi Battery Camera security solution mainly provides the following functions: wireless connection, ultra-low power consumption, remote active wake-up, quick start

Main Processor	Hi3518E
Sensor	1/3 COMS GC2063
Video	1920*1080 @25fps
	H.264/H.265Bitrate self-adaptive
	Suitable for changeable network environments(3G,4G or WIFI)
Audio	Two-way voice & Support echo cancellation
	Built-in speaker
	Built-in Microphone
View Angle	166 degree Horizontal
Day & Night	IR-CUT double filter automatically switches
	6pcs infrared LED 850nm
	Min Illumination:1 Lux
Connection	Support WiFi 2.4 GHz, IEEE 802.11 b/g/n
	Scan QR code
Storage	Support SD card 8G / 16G / 32G / 64G
Recording	Support smart phone local record, records video playback
	Optional recording time setting between 15s -45s, once device triggered
Screen Shot	Support Smart phone screen shots
Working Condition	Press Button Directly PIR detection triggered Mobile phone Control
Running up	System running up in millisecond
Inform	Push message within 1s-2s
Motion Detection	PIR motion detection, sensitivity High(2s)/ Medium(within 5s)/ Low (within 10 s)
Scene Mode	Backlight compensation
	Infrared night vision Quick movement HLC D-WDR
Share	Support QR code share(one-click generates QR-code, share to others
	To add your doorbell devices, join in remote control. Maximum supports 7 authenticated users, supports users 3 view at the same time
Battery	3.7V, Built in 18650 battery, Rechargeable or (14V~24V AC charging)
Power Consumption	Working 170mA, Standby 160μA

3. Apk main functions

Smart life apk integrates low-power smart security solutions Tuya , which provide the following management functions for Battery Camera:

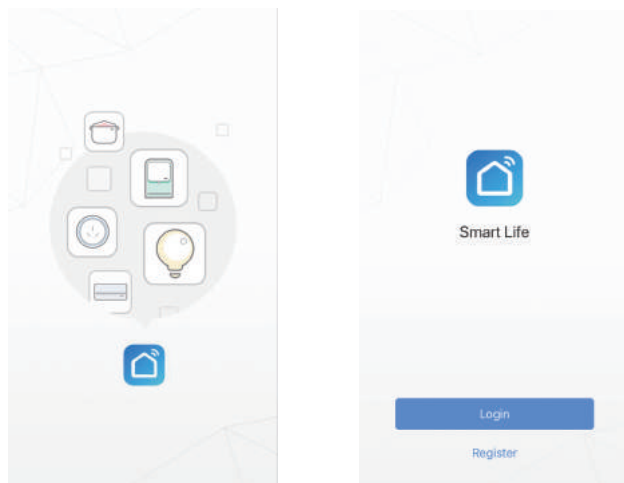
1. Smart Camera management functions, including adding and deleting Camera.
2. Configure the smart Camera connection through WiFi network on apk.
3. Receive push messages, including Camera call and motion detection (PIR) and push information management function.
4. Connect the Battery Camera, view the camera through the Camera, screenshot and local recording function.
5. Smart Camera user management function can share the video to other family members.
6. Smart Camera setting functions, including power management settings, basic function settings, motion detection settings, memory card settings, software upgrades.

Version support:

1. Android apk only supports Android 4.1 and above operating systems;
2. IOS apk supports IOS8.0 and above operating systems

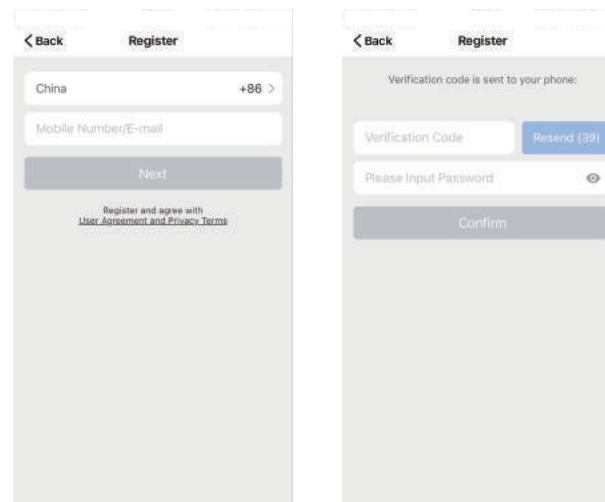
4. Apk Guide

Download smart life.apk on mobile phone, open apk, you can see the following guide page.



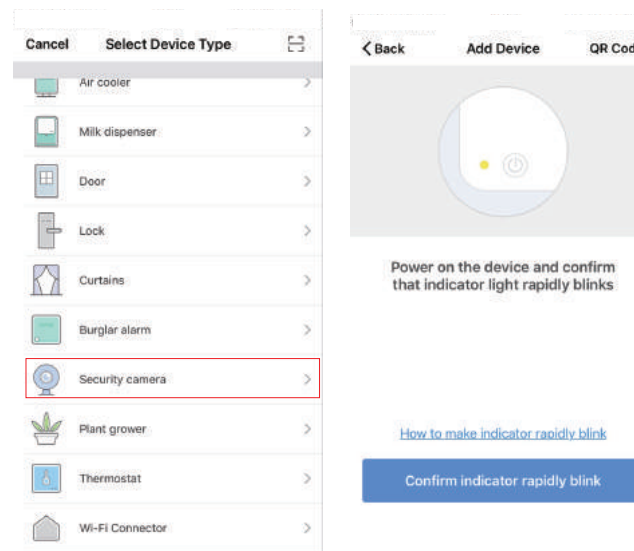
5. User Register

New user register it according to guide steps,already registered user just login it.



6. Add Device

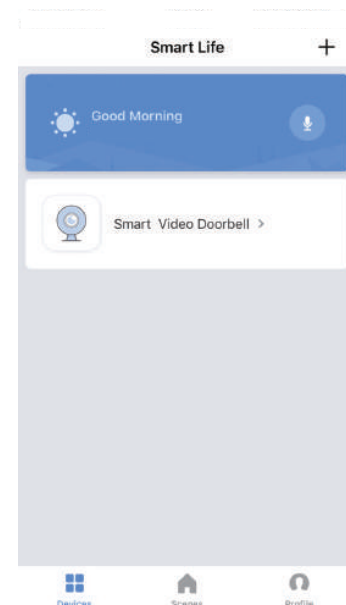
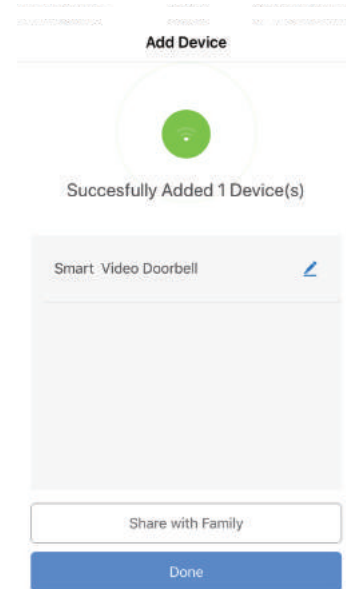
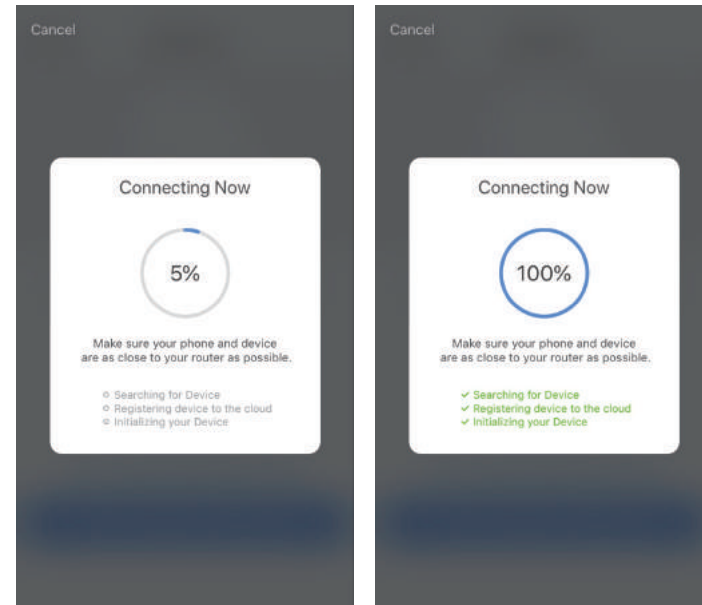
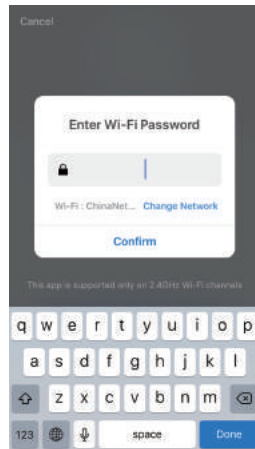
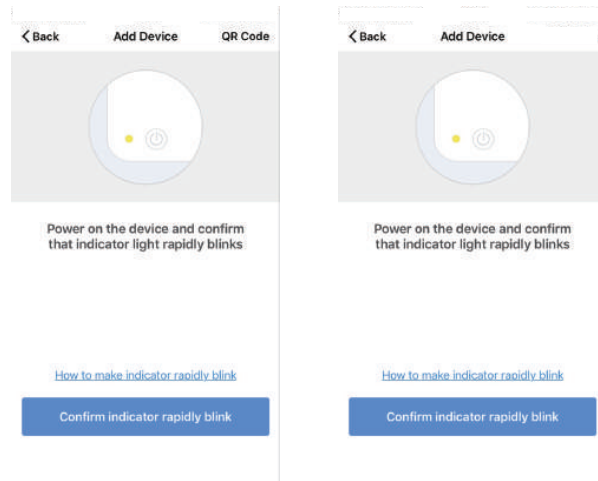
Select device type: Security camera.Then make connection with the device according to the steps



6.1 QR Code Connection

Power on the device and click“QR Code”,confirm that indicator light rapidly blinks.(red light blink per 1s),

Enter Wi-Fi Password and Confirm, it generates QR Code, scan it and waiting for device connection till success.device will show blue light blink always, name the doorbell.

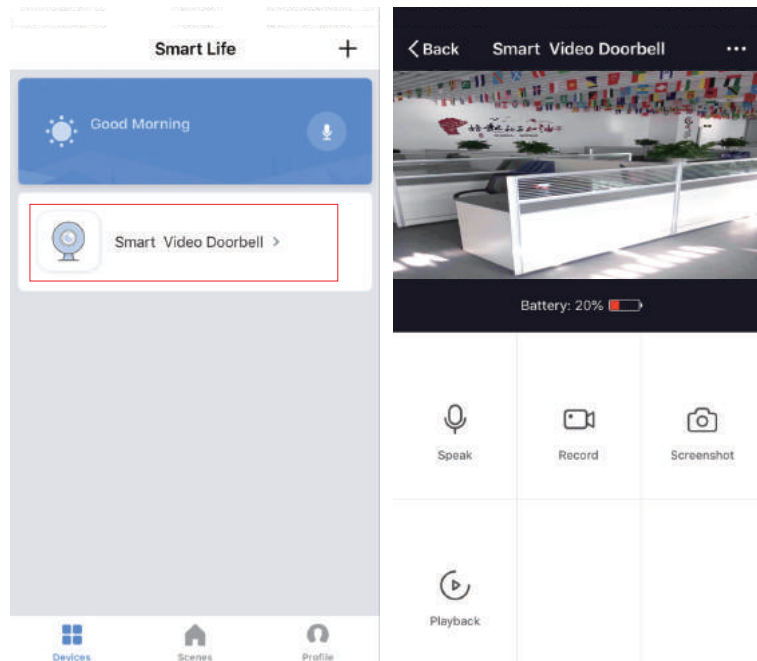


7. Live View Descripton

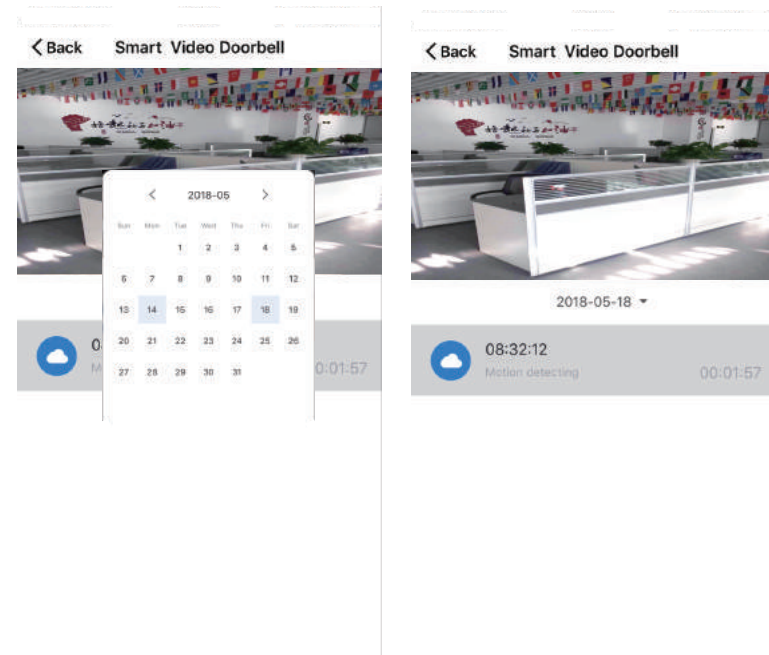
7.1 Live View

Device list, it shows all devices with network connection.

Select device name to live view images directly. Support following functions:
Two-way Audio; Video recording to local file; screenshot; playback video on TF card.



7.2 TF Card Video Playback



Video type icon description:

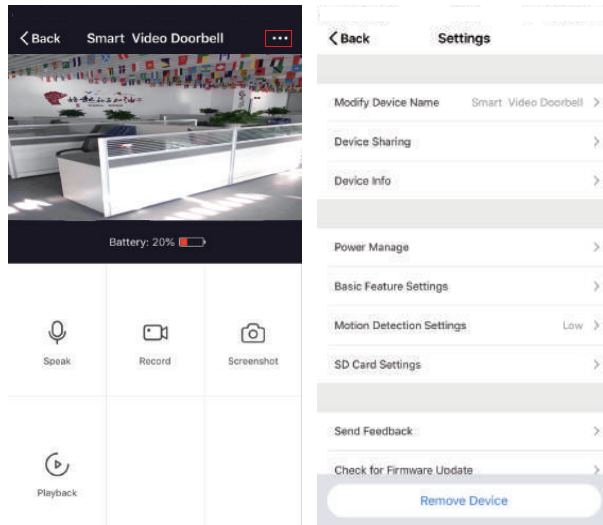
- 1.wake up the device and take video: smartphone app wakes up the device and recording.
- 2.Press button to wake up the device and take video: via Press the doorbell button, wake up the device and recording the device.
- 3.Motion detection and take video: Some people stay in front of the device or move will be detected, once it detects and recording.

TF card statement:

- 1.Currently the device only supports TF cards with the FAT32 system format, Others cannot be identified.

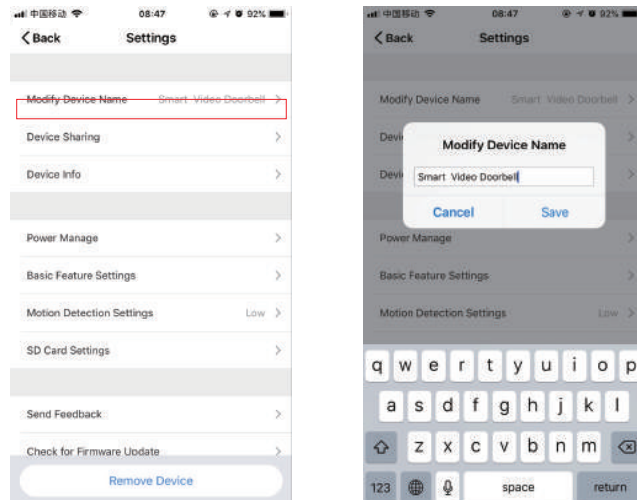
8. Device Management

Click “...” on live view page to enter device management.



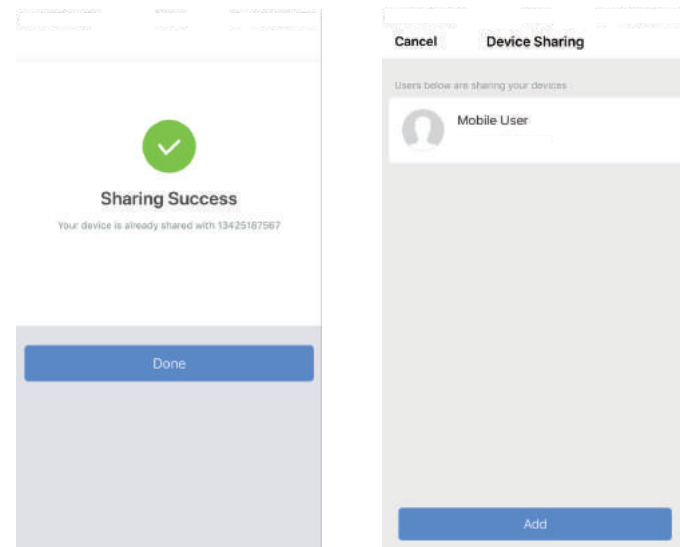
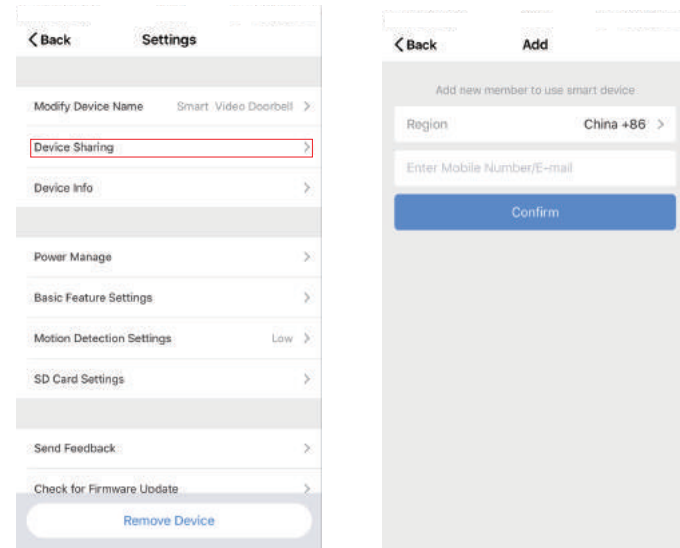
8.1 Modify Device Name

Click “Modify Device Name” on setting page to rename device.



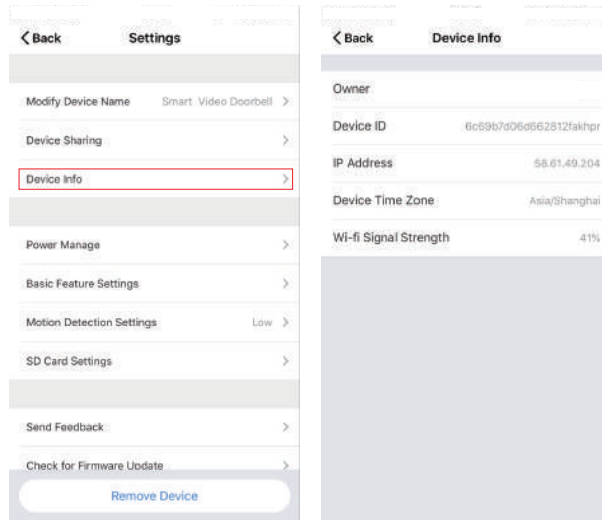
8.2 Device Sharing

Click “Device Sharing” on setting page to share other family members.



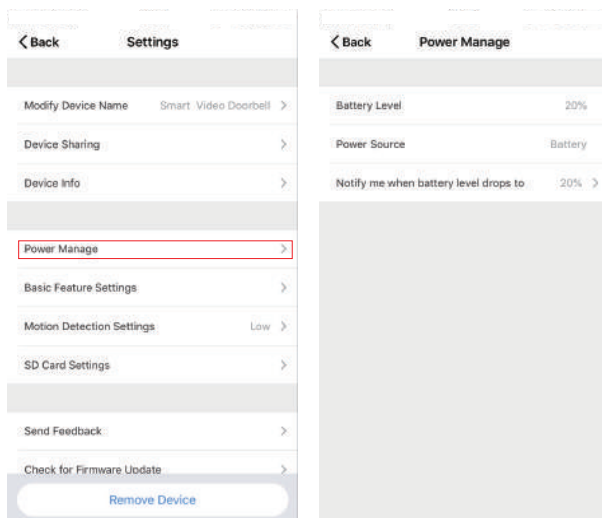
8.3 Device Info

Click “ Device info” to check device information.



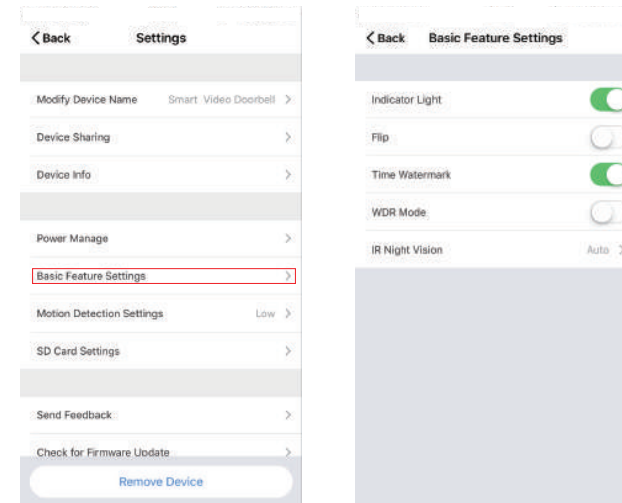
8.4 Power Management Setting

Click “ Power Manage ” to check power working status.



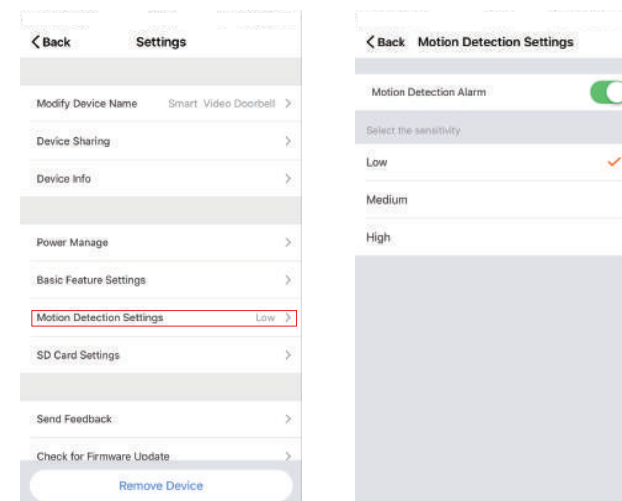
8.5 Basic Function Setting

Click “ Basic Function Settings” to set below functions: Indicator status; image reverse; time watermark; wide dynamic mode; IR night vision.



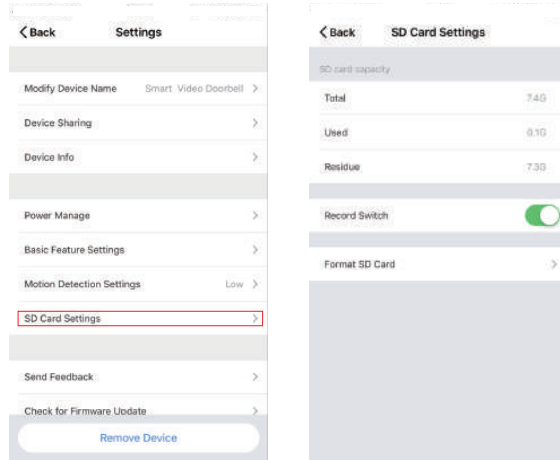
8.6 Motion Detection Setting

Click“Motion Detection Settings” to set the sensitivity.



8.7 SD card setting

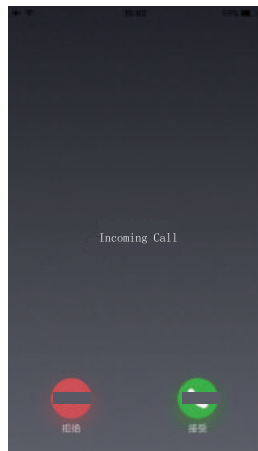
Click "SD card setting" to check SD card volume, setting SD recording take video or not, format memory card.



9. Apk receive push message

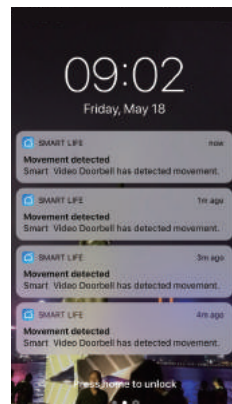
9.1 Call push message (only for doorbell)

Press doorbell and it rings, device make call to smartphone, select "Accept" to check the monitoring image or "Refuse" the call.



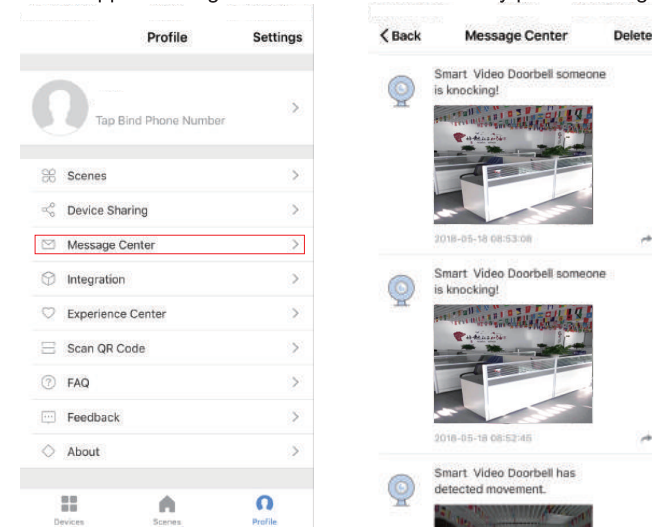
9.2 PIR Motion Detection Push Message

Select push message, some people stay in front of the device or move will be detected, once it detects and recording.



10. Message Center

Click app "Message Center" to check the history push message.



11. Setting

Click app "Setting" to set Sound, Push Notification etc

